

METAL DECORATING

UV Arc and UV LED Curing Systems

Ian Victor

Managing Director
Coleus Packaging (Pty) Ltd.

“To anybody that's going to convert to LED, you'll realise the benefits very, very quickly.

It is the way to go, it is the future, and the quicker you do it, the better.”

View our
Metal Decorating
Case Study



gewuv.com/coleus

Why use GEW UV Curing?

- UV curing enables safer, faster and more profitable production than conventional thermal drying systems
- Highest quality, robust design and construction for ultimate reliability and performance
- ArcLED interchangeable UV Arc and UV LED cassettes offer supreme flexibility
- Highest UV dose = lower power lamps = less heat on the material
- Compact solutions can be engineered to fit any machine.



RHINO power supply cabinets can be stacked, grouped together, or positioned along the length of the press.



Patented
Interchangeable
Technology

ArcLED hybrid UV technology allows interchanging of UV Arc and UV LED cassettes in the same housing.

E4C and NUVA2 Mercury Arc systems can easily be upgraded to LeoLED2 at any point in the future.



ArcLED cassettes can quickly and easily be interchanged; only a hex key tool is required

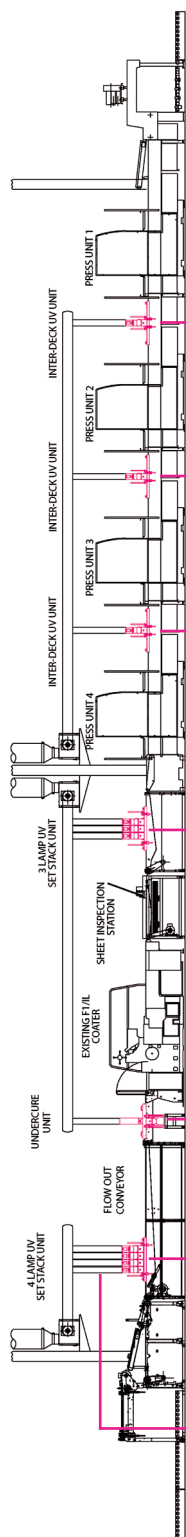
Designed and made in Britain

gewuv.com

GEW
...engineering UV

Mechanical integration with the press

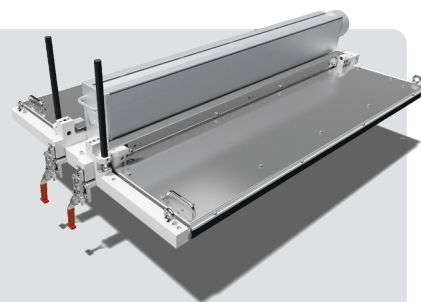
Each UV station is hinged to allow easy access to the under-bed sheet supports and belts. The units are easily lifted to 20° inclination and held in the raised position. A large air-cooled heatsink protects the conveyor from excessive heat build up.



Interdeck

The single-lamp interdeck units are mounted over the belt section of the press infeed between each print unit.

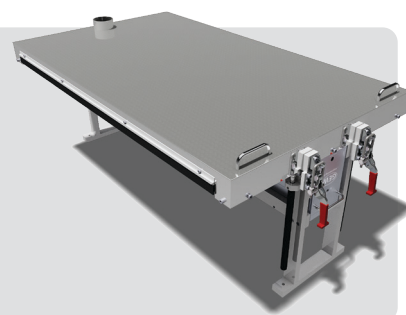
An air cooled under-bed heatsink protects the conveyor from excessive heat build-up.



Under-sheet

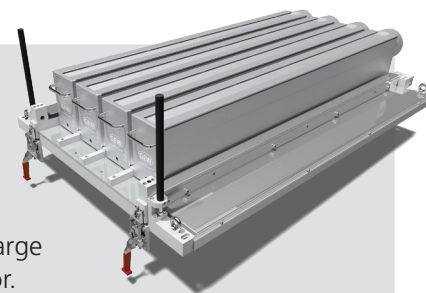
The single-lamp under-sheet unit is mounted after the coating station to cure any excess varnish that may have seeped over the sheet edge.

A hinging air-cooled heatsink shields the operator from heat build-up and stray light escaping from the unit.



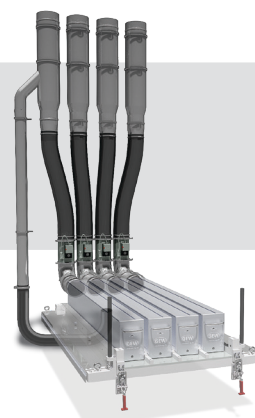
Set-stack/final cure

The set-stack and / or final cure units are mounted over the belt section at the end of the press. Both are multi-lamp units and the number of lamps is determined by the machine configuration. These units are also fitted with large under-bed heatsinks to prevent heat build-up in the conveyor.



Rigid ducting

Extraction fan and vertical ducting with integral autodamper to withdraw the UV lamp heat and ozone.



Please see the **E4C, LeoLED2 and NUVA2 brochures** for further system information and details.



Head Office

GEW (EC) Limited, Crompton Way, Crawley RH10 9QR, UK

UK +44 1737 824 500

Germany +49 7022 303 9769

USA +1 440 237 4439

E sales@gewuv.com

W gewuv.com